



Lakeland Municipal Parks & Recreation/Natural Resources Advisory Board
Regular Meeting Agenda
Tuesday, July 9, 2024, 5:30 PM
City Hall 10001 Hwy 70 Lakeland, TN 38002

- I. CALL TO ORDER:
- II. ROLL CALL:
- III. CONSENT AGENDA:
 1. Approval of Meeting Minutes from Previous Meetings:
 - a. **Regular Meeting Minutes** - May 14, 2024
- IV. CONSIDERATION AND POSSIBLE ACTION ON ITEMS REMOVED FROM CONSENT AGENDA:
- V. PUBLIC DISCUSSION:
- VI. REPORTS FROM OFFICERS AND STAFF:
 1. Parks Administration Update
 2. Recreation Update
 3. Senior Center and Special Events Update
- VII. OLD BUSINESS:
- VIII. NEW BUSINESS:
 1. **Presentation and Discussion** - regarding IH Managerial Park Pavilion.
 2. **Discussion** - regarding "Christmas in Lakeland" event.
- IX. ANNOUNCEMENTS:
- X. ADJOURNMENT:

LAKELAND PARKS & RECREATION/NATURAL RESOURCES BOARD
REGULAR MEETING MINUTES
TUESDAY, MAY 14, 2024, 5:30 P.M.
CITY HALL, LAKELAND, TENNESSEE 38002

I. CALL TO ORDER:

The meeting was called to order at 5:30 p.m. by Chair Mark Donley on Tuesday, May 14, 2024.

II. ROLL CALL:

(C) Mark Donley	Present
Stacy Bond-Monasky	Present
Jessica Cannon	Present
Jenny Kiesel	Present
Ben Ledsinger	Absent
Jeff Roman	Present
Amber Sawyer	Present
Steve Snow	Absent
Commissioner Michele Dial	Present

Staff personnel present for the meeting were Parks and Recreation Director Andrew Fisher, Recreation Manager John Proctor and Senior Center/Special Event Manager Kim Odom.

III. CONSENT AGENDA:

1. Approval of Previous Meeting Minutes:
 - a. January 23, 2024

Commissioner Dial motioned to approve the minutes seconded by Mark Donley.

When the question was called the meeting minutes passed as presented, voice vote, 7 in favor 0 against (7-0).

IV. CONSIDERATION AND POSSIBLE ACTION ON ITEMS REMOVED FROM THE CONSENT AGENDA:

None.

V. PUBLIC DISCUSSION:

For the record: Public comments were heard at the time of the correlating agenda item.

VI. REPORTS FROM OFFICERS AND STAFF:

1. Parks Administration Update

Parks and Recreation Director Andrew Fisher provided the update.

Discussion ensued.

2. Recreation Update

LAKELAND PARKS & RECREATION/NATURAL RESOURCES BOARD
REGULAR MEETING MINUTES
TUESDAY, MAY 14, 2024, 5:30 P.M.
CITY HALL, LAKELAND, TENNESSEE 38002

Recreation Manager John Proctor provided the update.

Discussion ensued.

3. Senior Center and Special Events Update

Senior Center and Special Events Manager Kim Odom provided the update.

Discussion ensued.

VII. OLD BUSINESS:

None.

VIII. NEW BUSINESS:

- 1. Presentation and Discussion** – regarding the youth cheer program.
Presented by Candace Nurse

Candace Nurse presented this item.

Discussion ensued.

For the record: No motions were presented for PRB action.

- 2. Discussion and Work Session** – regarding youth recreation soccer program.

For the record: Comments were heard from Derek Johnston of the 9000 block of Laurel Hill Drive.

Parks and Recreation Director Andrew Fisher presented this item.

Discussion ensued.

For the record: Amber Sawyer motioned to recommend renewal of current soccer contractor to the Board of Commissioners seconded by Stacy Bond-Monasky.

When the question was called the motion passed, voice vote, 7 in favor 0 against (7-0).

IX. ANNOUNCEMENTS:

- Parks and Recreation Director Andrew Fisher announced the next meeting date – July 9, 2024.

**LAKELAND PARKS & RECREATION/NATURAL RESOURCES BOARD
REGULAR MEETING MINUTES
TUESDAY, MAY 14, 2024, 5:30 P.M.
CITY HALL, LAKELAND, TENNESSEE 38002**

2. Commissioner Dial offered gratitude to the board for their support of fellow board member Steve Snow.

X. ADJOURNMENT:

There being no other business, the meeting was adjourned without objection at 6:48 p.m. on Tuesday, May 14, 2024.

These minutes were approved on July 9, 2024.

Amber Sawyer
Secretary

ATTEST:

Cheyenne Carter
City Recorder

DRAFT



**Lakeland Municipal
Parks &
Recreation/Natural
Resources Advisory
Board**

Meeting Cycle: Tuesday, July 9, 2024

Subject: Parks Administration Update

Staff Contact: Andrew Fisher, Parks and Recreation Director

STAFF RECOMMENDATION

BUDGET IMPACT

DISCUSSION

July 9, 2024

PARKS ADMINISTRATION

1. Athletic Complex

- A. Musco Lighting Project.
 - i. Light towers are now installed and boring to run electrical wire should begin soon.
- B. Phase II project.
 - i. The project design and engineering are complete and being submitted to staff as a one phase project.

2. IH Park Improvements

- A. IH Park Restroom facility project.
 - i. Design and engineering are still being reviewed at the state level.
 - ii. Site pad prep plan

3. Lakeland Community Center

- A. Current status overview.

4. Facility Rentals

- A. IH Clubhouse Rentals
 - i. May 2024
 - 1. City Programs: 7
 - 2. Non-Profit/Community Group Rentals: 18
 - 3. Private Rentals: 1
 - ii. June 2024
 - 1. City Programs: 7
 - 2. Non-Profit/Community Group Rentals: 14
 - 3. Private Rentals: 4
- B. Pavilion Rentals
 - i. May 2024 – 4
 - ii. June 2024 – 2

5. Park Maintenance Updates

- A. Grass is growing and it shows no signs of slowing.
- B. Oak Ridge Park pavilion now has gutters to address the drainage problem.
- C. IH Clubhouse is getting new gutters.

D. Lakeland Athletic Complex common area outside of field 1 was sprayed, tilled, and sodded with new Bermuda grass.

6. Presentation of the Parks and Recreation FY25 Work Plan
7. Presentation of the Parks and Recreation CIP List
8. BCBS Healthy Places Grant



BlueCross
HEALTHY
PLACESM



of Tennessee
FOUNDATION

2024 CATALOG





The BlueCross BlueShield of Tennessee Foundation wants to provide our neighbors with places that help them get to know one another, form new connections and enjoy healthy activity. This is why we're building BlueCross Healthy Places in Tennessee.

To assist in your custom design process, this catalog contains examples of completed BlueCross Healthy Place projects, along with new, exciting ideas to consider.

If a custom design process is not a possibility, we also provide four pre-designed options to select from on page eight.

CUSTOM BLUECROSS HEALTHY PLACES



DAVID CARNES PARK

- » Accessible play areas
- » Community pavilions
- » Splash pad
- » Challenge course
- » 40-yard dash
- » Improved walking paths
- » Fitness & play pods



HIGHLAND PARK

- » Accessible play areas
- » Challenge course
- » Fitness station
- » Multi-purpose field
- » Tennis and basketball courts
- » Walking track
- » Community pavilion



HUNTLAND CITY PARK

- » Accessible play area
- » Full basketball court
- » Walking track
- » Outdoor fitness equipment



HENRY HORTON STATE PARK

- » Accessible play area
- » Nature and discovery trail
- » Water spray and play zone



NORTHWEST FAMILY YMCA

- » Accessible play area
- » Full basketball court
- » Walking track
- » Outdoor fitness equipment
- » Pavilion
- » Challenge course



NEW IDEAS

- » Amphitheaters
- » Art installations
- » Trail head build out
- » Skate park



BLUECROSS HEALTHY PLACE AT DAVID CARNES PARK

**9.2
Acres**

This nine-acre project includes a pavilion for community gatherings, a splash pad, an accessible playground, a challenge course, a 40-yard dash and improved walking paths. The walking trail features fitness pods and play pockets, including a replica blacksmith shop that honors David Carnes, one of the first African-American landowners in the area and the park's namesake.



Accessible play area



Multi-purpose field



Splash pad



Community pavilion



Play pod



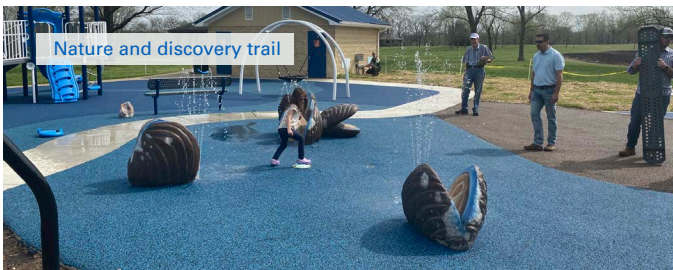
Fitness pod



BLUECROSS HEALTHY PLACE AT HENRY HORTON STATE PARK

**0.2
Acres**

The BlueCross Healthy Place at Henry Horton State Park celebrates the nature and history of the region. It includes two fully accessible play areas: one for children aged 2-5 and one for children aged 5-12. Both spaces include ramp access, specially designed equipment and a soft rubber safety surface for children who use wheelchairs and other mobility devices. Adjacent to the play areas is a discovery trail and several discovery pods designed to teach children about area wildlife and the history of the park. Features include an erosion table, elements explaining the life cycle of a frog and a small gristmill.

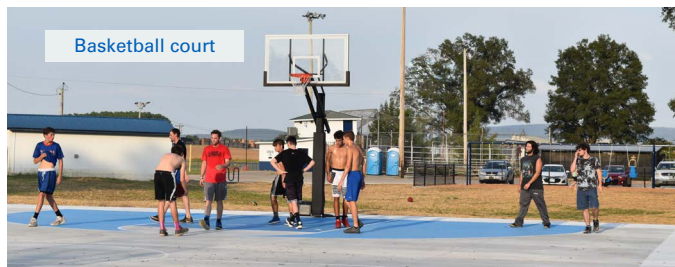




BLUECROSS HEALTHY PLACE AT HUNTLAND CITY PARK

**1.7
Acres**

The BlueCross Healthy Place at Huntland City Park is home to a newly constructed fenced playground. It features accessible equipment designed for children of all abilities. The space also includes outdoor fitness equipment, a new walking track, sway benches, a basketball court with bleachers, additional parking, water fountains, picnic tables and grills.





BLUECROSS HEALTHY PLACE AT HIGHLAND PARK

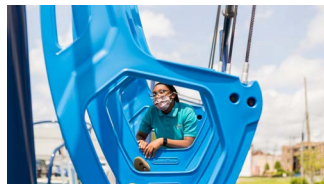
**4.3
Acres**

The BlueCross Healthy Place at Highland Park was completed in partnership with three schools; Chattanooga Girls Leadership Academy, Chattanooga Prep and the Montessori Elementary of Highland Park. The new community space has a variety of features suitable for visitors of all ages and interests, including a multi-purpose field with bleachers, a walking track, outdoor fitness stations, a challenge course, play areas, and basketball and tennis courts.

Challenge Course



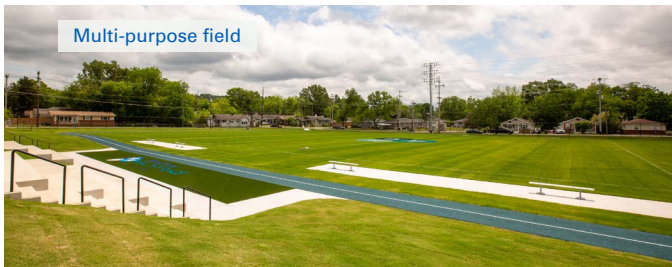
Accessible play area



Basketball court



Multi-purpose field



Fitness pod





BLUECROSS HEALTHY PLACE AT THE NORTHWEST FAMILY YMCA

3
Acres

The BlueCross BlueShield of Tennessee Foundation invested \$6.4 million to build the first BlueCross Healthy Place in the Nashville area. It has assets for community members of all ages and is open to everyone, regardless of membership status.



Accessible play area



Challenge course



Basketball court



Community Pavilion



Fitness pod



Multi-purpose Field



IDEAS AND INSPIRATION



Amphitheater



Skate park



Community garden



Trail head



Bike pump track



Sculptures



Community memorial



PRE-DESIGNED PACKAGES

We understand that the custom design process can be challenging, so we are providing four pre-designed packages to select from. Each design includes accessible elements and features for visitors of all ages.



COMMUNITY HUB

- » Community pavilion
- » Inclusive play areas
- » Fitness stations
- » Swing set



MOVE AND PLAY

- » Large inclusive play area
- » Thrive fitness station
- » Community pavilion
- » Swing set and freestanding play area



GAME TIME

- » Inclusive play areas
- » Swing area
- » Challenge course with a 40-yard dash
- » 20x24 pavilion



JOURNEY AND EXPLORE

- » Inclusive play areas
- » Fitness equipment
- » Thrive 450 fitness station
- » 20x24 pavilion

Final design and included assets to be finalized prior to installation. Full details and requirements available in the appendix.



COMMUNITY HUB

The **Community Hub** Package includes a pavilion surrounded by fitness and play elements. This package features two different play areas with poured-in-place surfacing; one for those aged 2-5, and a ramped one for those aged 5-12, a swing area, three outdoor fitness stations for cardio, balance and strength workouts, and a pavilion with picnic tables and trash receptacles. Here, the entire community can enjoy fitness, play, walking and picnics.

**Minimum space requirements:
(160' x 109' or 17,440 sq. ft.)**

FEATURES

- » Play systems for ages 2-5 and 5-12 with accessible poured-in-place surfacing
- » Swing area with tot swing, Expression Swing and traditional belt seats
- » 20x24 pavilion with picnic tables and trash receptacles
- » 50 feet of sidewalk to access play and fitness amenities
- » Benches
- » Bike rack



BLUECROSS HEALTHY PLACE ENTRY SIGN

FITNESS STATION 1

- » Recumbent Cycle
- » Captain's Chair

5-12 RAMPED PLAY AREA

- » Benches
- » Poured-in-Place Surfacing with Logo
- » 5-12 Play System with Integrated Shade, Slides, Net Climbers
- » Whirlwind Seat

50 FT OF SIDEWALK AT FIVE FT WIDE

SWING AREA

- » 1 Expression Swing
- » 1 Tot Seat
- » 4 Belt Seat Swings

FITNESS STATION 2

- » Leg Press
- » Balance Board
- » Body Curl

COMMUNITY AREA

- » 20x24 Pavilion
- » 4 Picnic Tables
- » 2 Trash Receptacles

BIKE RACK

FITNESS STATION 3

- » Chest Press
- » Cardio Walker

2-5 PLAY AREA

- » Benches
- » Poured-in Place Surfacing
- » Whirlwind Seat
- » 2-5 Play System with Slides, Climbers and Balance Beams
- » Upper Body Trainer
- » Trash Receptacle

JOURNEY AND EXPLORE

Introducing **Journey and Explore**: A perfect addition to any existing or new trail system, designed to elevate the outdoor experience. Our play pockets are brimming with excitement, offering a variety of thrilling and inclusive activities like climbing nets, spinners, slides, and nature-themed elements. The fitness pods offer a diverse range of equipment for all users, strategically arranged to promote seamless movement and transitions between stations.

**Minimum space requirements:
Pods can range from 400 sq.ft – 2,000 sq.ft.**

FEATURES

- » Play equipment for ages 2-5 and 5-12 with accessible surfacing
- » Fitness equipment
- » Thrive 450 fitness station for ages 13+
- » 20x24 pavilion with picnic tables and trash receptacles
- » Benches
- » Bike rack





FITNESS POD

PLAY POD

**THRIVE 450
FITNESS STATION**

FITNESS POD

2-5 PLAY AREA

PLAY POD

FITNESS POD

5-12 RAMPED PLAY AREA

COMMUNITY AREA

- » 20x24 Pavilion
- » 4 Picnic Tables
- » 2 Trash Receptacles

GAME TIME

Introducing the **Game Time!** The ultimate enhancement for any sports facility. This comprehensive package includes a stunning pavilion at its center, surrounded by diverse fitness and play elements. With inclusivity in mind, the package offers two separate play areas featuring poured-in-place surfacing. One area caters to ages 2-5, while the other is designed for ages 5-12. Both areas include ramped play units, a swing area, and an exciting challenge course with a 40-yard dash. Additionally, the package provides a pavilion equipped with picnic tables and convenient trash receptacles, creating a perfect space for relaxation and refreshments. Elevate your sports facility with the all-encompassing Game Time package for endless enjoyment and active fun.

**Minimum space requirements:
+/- 20,000 sq. ft.**

FEATURES

- » Play systems for ages 2-5 and 5-12 with accessible poured-in-place surfacing
- » Swing area with ADA swings, Expression Swings, and traditional belt seats
- » Challenge course with a 40-yard dash
- » 20x24 pavilion with picnic tables and trash receptacles
- » 50 feet of sidewalk to access play and fitness amenities.
- » Benches
- » Trash receptacles



40-YARD-DASH

CHALLENGE COURSE

COMMUNITY AREA

- » 20x24 Pavilion
- » 4 Picnic Tables
- » 2 Trash Receptacles

SWING AREA

- » 1 Expression Swing
- » 1 Tot Seat
- » 4 Belt Seat Swings

2-5 PLAY AREA

- » Benches
- » Poured-in-place Surfacing
- » Whirlwind Seat
- » 2-5 Play System with Slides, Climbers and Balance Beams
- » Upper Body Trainer
- » Trash Receptacle

5-12 RAMPED PLAY AREA

- » Benches
- » Poured-in-place Surfacing with Logo
- » 5-12 Play System with Integrated Shade, Slides, Net Climbers
- » Whirlwind Seat



The **Move and Play** Package features exciting amenities for communities seeking an inclusive and multi-generational space. This package includes an inclusive, ramped playground for ages 2-12 with accessible poured-in-place surfacing, a swing area, a community pavilion with seating, and a Thrive exercise system for children and adults 13+ years.

**Minimum space requirements:
(87' x 153' or 13,311 sq.)**

FEATURES

- » Inclusive, ramped playground for ages 2-12 and freestanding play elements
- » Swing area with inclusive swing seats and Expression Swing
- » Community pavilion with picnic tables
- » Thrive 450 fitness station for ages 13+
- » Sidewalk
- » Bike rack
- » Trash receptacles



COMMUNITY AREA

- » 20x24 Pavilion
- » 4 Picnic Tables
- » Trash Receptacles

FITNESS STATION

- » Thrive 450 Functional Training System

BLUECROSS HEALTHY PLACE ENTRY SIGN

BIKE RACK

SWING AREA

- » Two Zero G Inclusive Swings
- » Tot Seat
- » Expression Swing
- » 2 Belt Seat Swings
- » Trash Receptacle

2-12 PLAY AREA

- » Ramped Accessible Play System with Integrated Shade
- » Accessible Poured-in-place Surfacing
- » Slides
- » Challenging Climbing Elements
- » Freestanding Play
- » Merry-Go-All
- » Ground Level Musical Play
- » Sensory Cove
- » Whirlwind Seat
- » Benches
- » Trash Receptacle



BUILD REQUIREMENTS AND SPECIFICATIONS

PROJECT BUILD PARTNER

The BlueCross BlueShield of Tennessee Foundation is collaborating with the GameTime Division of PlayCore, a leading national manufacturer of institutional playground and fitness equipment; site furnishings; shade and shelter structures; water play; and other recreational products. PlayCore is a licensed (#50559) Tennessee and multi-state general contractor providing comprehensive “turnkey” BlueCross Healthy Place services: design and engineering; equipment layout, factory-certified assembly and installation; play and fitness area drainage; impact-attenuating safety surfacing and synthetic turf; landscaping beds and plantings; seed and straw restoration of construction site; ancillary goods and services as appropriate; and work completion inspection.

STATE & LOCAL MUNICIPALITIES

In order to prevent project delays, Applicant shall obtain written approval from the associated Building Department, Planning & Zoning, Stormwater Engineering, Parks & Rec Directors, and any other associated Construction/Utility divisions in the jurisdiction.

SIDEWALKS AND ENTRIES

All BlueCross Healthy Places also include perimeter and internal area sidewalks; concrete landscape bordering; fitness instructional signage; and an entrance package featuring a BlueCross-branded rock pillar entry sign, bicycle rack, and ADA access sidewalk extending from the amenity area to an existing accessible route (i.e.: ADA compliant sidewalk or accessible parking area).

PlayCore can provide more sidewalk length if needed to comply with ADA standards and guidelines and site requirements at an additional cost to the grantee. Pre-designed package renderings are for presentation purposes only and may not totally reflect the finished product due to modifications to accommodate specific location sites.

CHALLENGE COURSE AND 40-YARD DASH TIMING // SPLASH PAD REQUIREMENTS

Challenge courses and the 40-yard dash have a timing apparatus requiring 110 Volt (low voltage) power on site. The grantee will be responsible for furnishing electric service to the connection points for each amenity and, if required, an electric meter, meter box, electrical permit or other necessities. PlayCore will complete the electrical hookup. For splash pad installations the grantee, in addition to the electrical requirements, will be responsible for furnishing water and sewer service to connection points and if required water meter, meter box, and any required permitting or other necessities. Playcore will complete the connections to both water and sewer hookup. Additional annual costs of maintaining a splash pad element are not included in the grant. This can include water fees for upwards of 25,000 gallons of water per/day.



BUILD REQUIREMENTS AND SPECIFICATIONS (CONT.)

DRAINAGE AND PERMITTING

BlueCross Healthy Places include drainage provisions for rainwater and runoff collected within the project's concrete boundaries. Drainage included in this application consists of underground drain pipes exiting to daylight within 50 lineal feet beyond the package perimeter. Any additional drainage required will be provided by the grantee or PlayCore, but at grantee's expense.

Should a permit(s), approval(s), inspection(s), planning be needed, its cost and any required plans or document preparation, including plan professional stamping, will be paid for by the grantee. PlayCore will arrange for the location of existing public utilities prior to disturbing the site for construction purposes. The grantee is responsible for locating private utilities.

SITE TOPOGRAPHY AND MAINTENANCE

Grantees' sites are expected to be clear, level (flat 1.5% slope), free of obstacles, buried utilities, tree stumps, bedrock, or any concealed materials or conditions that result in additional construction labor or material costs. If local requirements dictate, site topography or soil conditions necessitate a professional land or geotechnical survey, the cost will be borne by the grantee. (Note: Please take into consideration existing conditions and drainage, final grade & elevations of site surfacing and concrete will be dictated by existing sidewalks to maintain ADA requirements.)

Sites shall permit unrestricted access for large construction equipment and delivery trucks and include a staging area for unloading and storage of build materials prior to installation. Upon completion of construction, general maintenance and upkeep of BlueCross Healthy Place equipment and environment will transfer to the grantee.

COMPLIANCE

All BlueCross Healthy Place designs comply with ASTM F 1487-17, Standard Consumer Safety Performance Specification for Playground Equipment for Public Use; Handbook for Public Playground Safety Publication 325 by the U.S. Consumer Product Safety Commission; Guide to ADA Accessibility Guidelines for Play Areas published by the U.S. Access Board; and ASTM F 3021-15, Standard Specification for Universal Design of Fitness Equipment for Inclusive Use by Persons with Functional Limitations and Impairments.



**Lakeland Municipal
Parks &
Recreation/Natural
Resources Advisory
Board**

Meeting Cycle: Tuesday, July 9, 2024

Subject: Recreation Update

Staff Contact: John Proctor, Recreation Manager

STAFF RECOMMENDATION

BUDGET IMPACT

DISCUSSION

July 9, 2024

RECREATION / ATHLETICS UPDATE

1. Youth Spring/ Summer Baseball

- a. The season has finished for all our teams as of June 29
 - i. 2-6U, 2- 8U, & 1-10U

2. Youth Flag Football Mini-Session

- a. The season has finished for all our teams as of June 26.
- b. Age Group Numbers: Total – 177 (2023 – 106)
 - i. 8U – 77 (7 Teams)
 - ii. 10U – 58 (5 Teams)
 - iii. 12U – 42 (4 Teams)
- c. The season with June 3-June 20.
- d. Playoffs were the week of June 24 with the Championships on June 25-26.

3. Youth Fall Competitive Tackle Football

- a. Registration closed June 30.
- b. Age groups numbers as of July 1
 - i. 8U – 16 (2023 – 17)
 - ii. 10U – 20 (2023 – 31)
 - iii. 12U – 25 (2023 – 26)
- c. Practices will begin this week, July 8 with conditioning for two weeks.
- d. Equipment disbursement scheduled for July 19-20
- e. Games will tentatively start in Mid-August.

4. Youth Fall Tackle Football Cheerleading

- a. Registration closed June 9, but we are slowly adding more each week.
- b. Currently have 47 registered cheerleaders.
- c. Uniforms have been ordered and are expected by early August.
- d. We will have a parent meeting on July 16 at 6:00PM at City Hall.
- e. Practices will officially start July 23.
- f. Games will tentatively start in Mid-August.

5. Youth Fall Flag Football

- a. Registration is now open through July 28.
 - i. Age groups
 1. 6U – 10
 2. 8U – 26
 3. 10U – 8
 4. 12U – 2

- b. Practices will begin in early August.
- c. Games will begin in late August- Early September

6. Youth Fall Soccer

- a. Registration is open through August 3.
- b. Practices will start August 19.
- c. Games will tentatively start September 7.
- d. The season will end by November 16.

7. Adult Summer Soccer

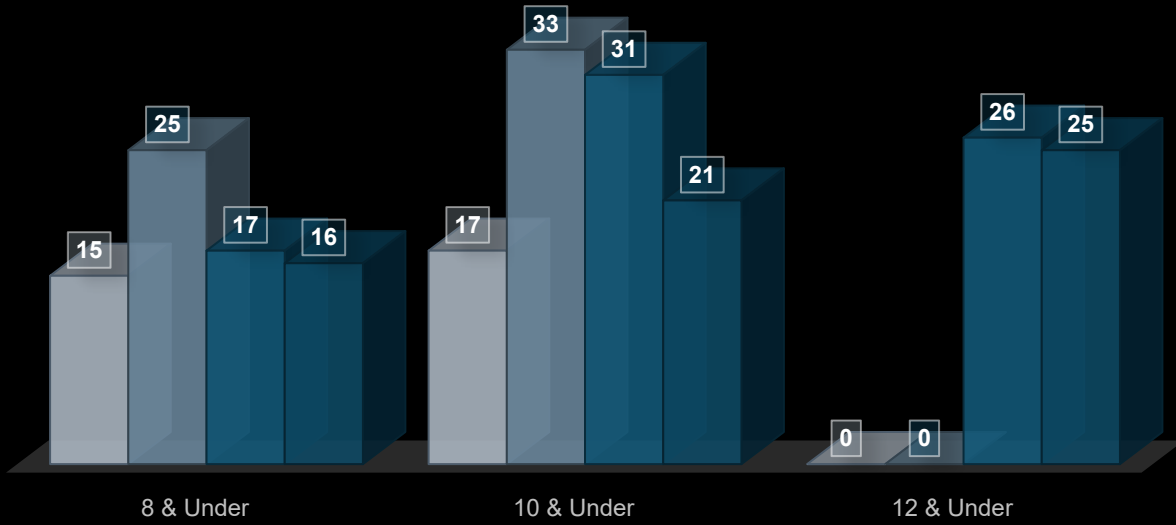
- a. The season started June 8 and will go through July 20.
- b. Playoffs start July 27 and finish August 3.

8. Adult Fall Flag Football

- a. Registration is now open through August 17.
- b. Games will begin in late August- October.

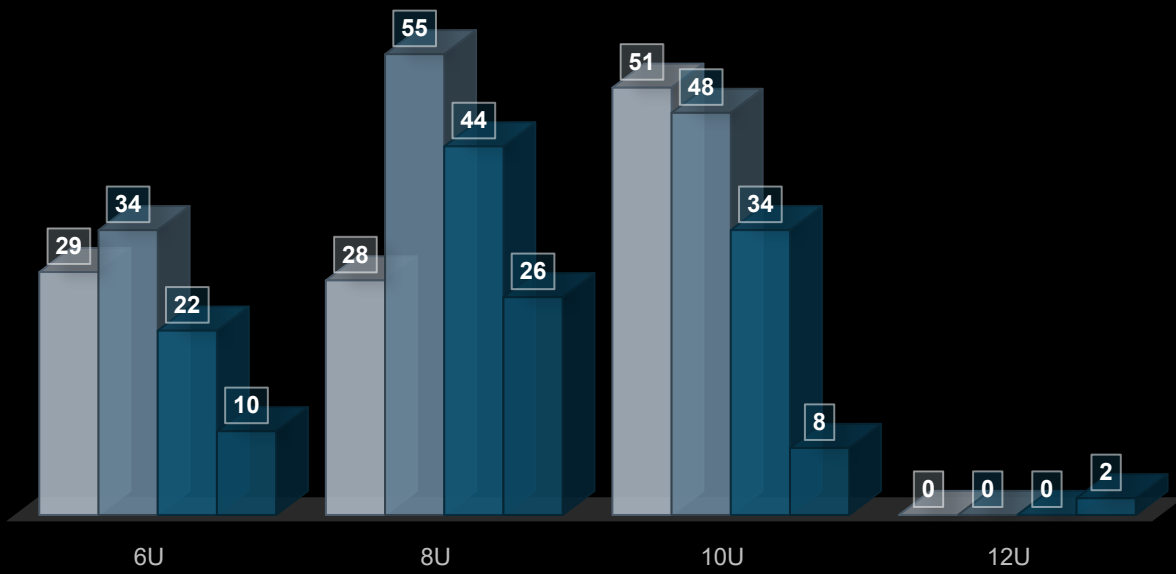
YOUTH COMPETITIVE TACKLE FOOTBALL TRENDS

FY22 FY23 FY24 FY25



YOUTH FALL FLAG FOOTBALL TRENDS

FY22 FY23 FY24 FY25





**Lakeland Municipal
Parks &
Recreation/Natural
Resources Advisory
Board**

Meeting Cycle: Tuesday, July 9, 2024

Subject: Senior Center and Special Events Update

Staff Contact: Andrew Fisher, Parks and Recreation Director

STAFF RECOMMENDATION

BUDGET IMPACT

DISCUSSION

July 9, 2024

SENIOR CENTER & SPECIAL EVENTS UPDATE

1. SENIOR CENTER

A. Attendance

- i. May 2024 – 429
 - 1. 4-Week Polymer Pottery Workshop through Creative Aging.
 - 2. Lunch & Learn “Senior Living Seminar,” presented by W.I.S.H. (Women in Senior Healthcare). It was a panel of 9.
 - 3. Lunch & Learn “Clear the Clutter,” presented by Kristen Miller with Midsouth Aging Consultant.
- ii. June 2024 – 401
 - 1. 4-Weekly Polymer Pottery Workshop continued.
 - 2. Lunch & Learn “Financial Planning,” presented by Brad Thomas with Thrive.
 - 3. 2-Day Scarf Dyeing Workshop through Creative Aging.

B. Upcoming

- i. July
 - 1. 4-Week Polymer Pottery Workshop by Creative Aging.
 - 2. Christmas in July activities with 8 holiday crafts added to the calendar this month.
 - 3. 4-Week Zentangle Art Workshop through Creative Aging.
 - 4. Grandparents Day (Art with a grandchild) and breakfast snacks.
 - 5. Lunch & Learn “Senior Center Talk.” Participants are invited to provided new and fresh ideas for the Center, such as programs and/or activities they’d like to see added to the calendar.

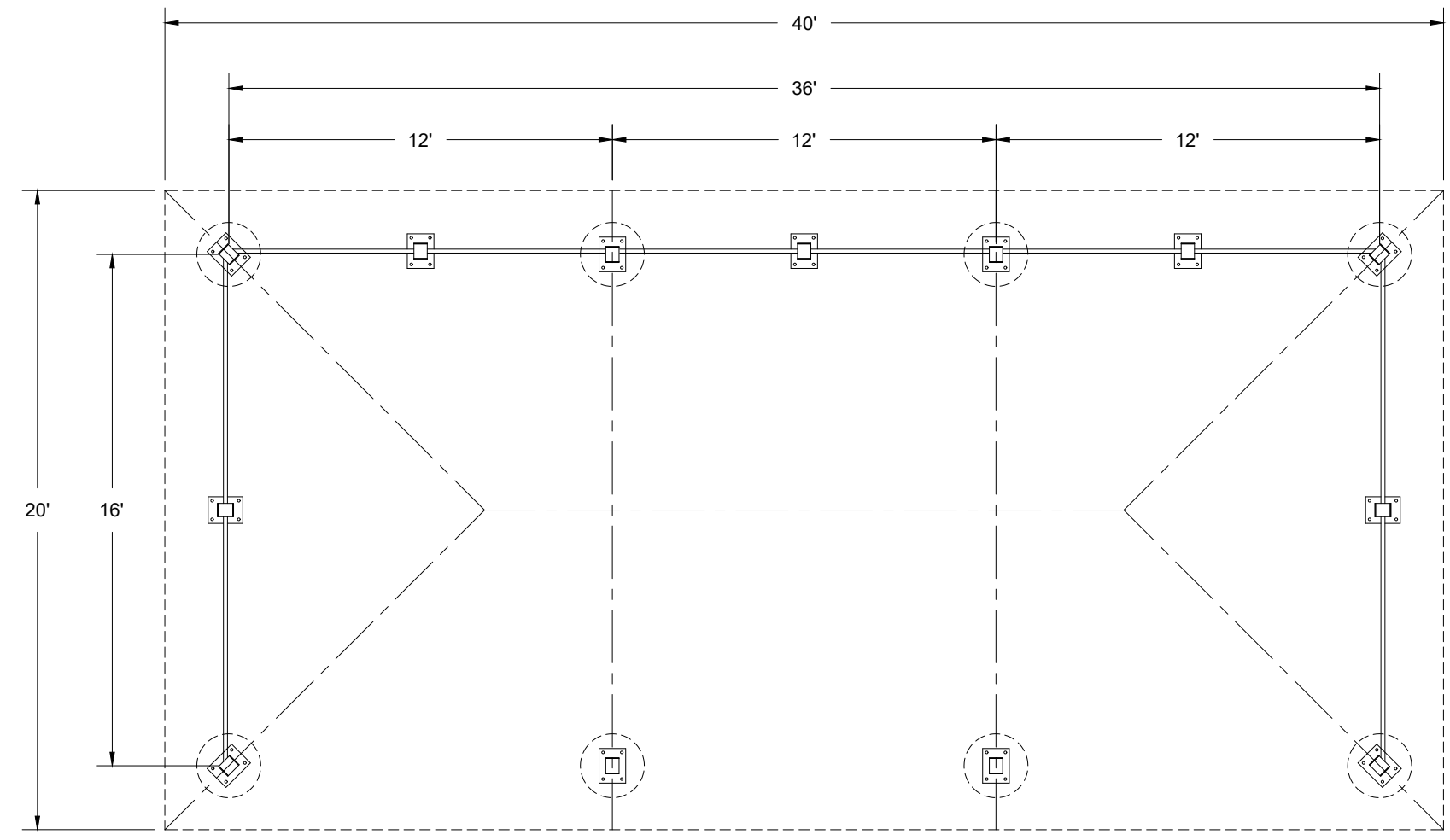
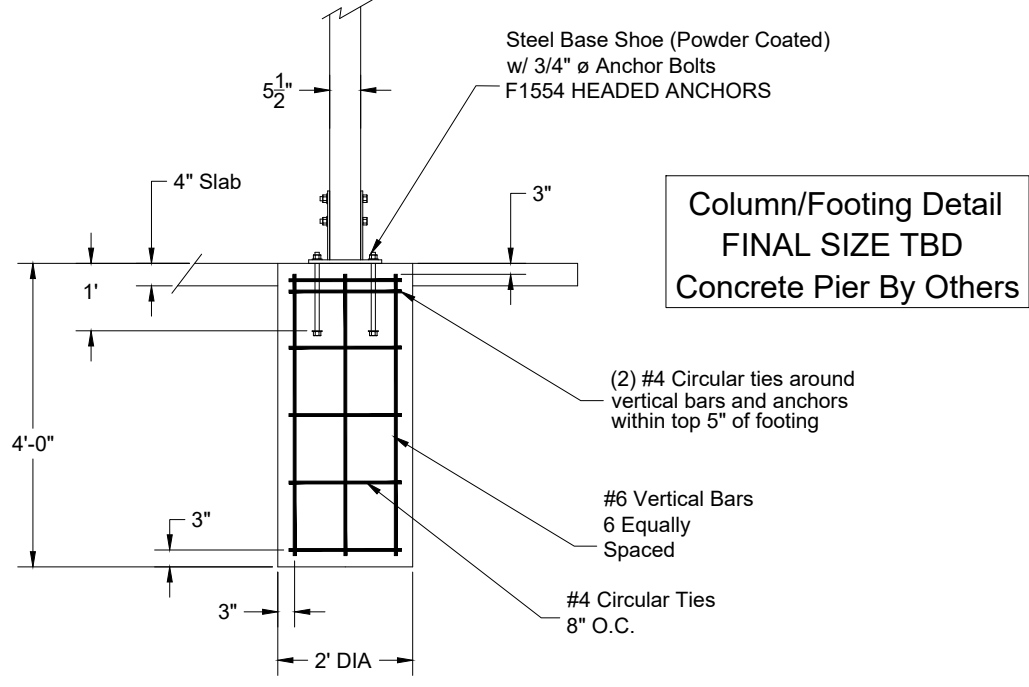
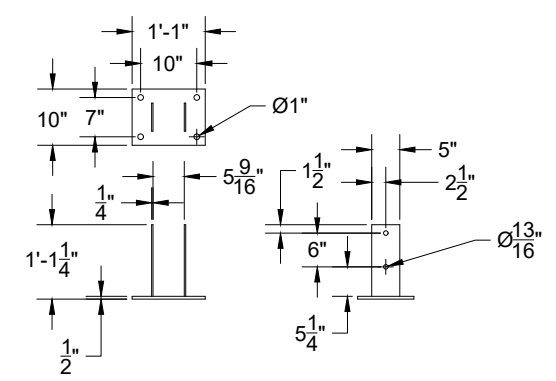
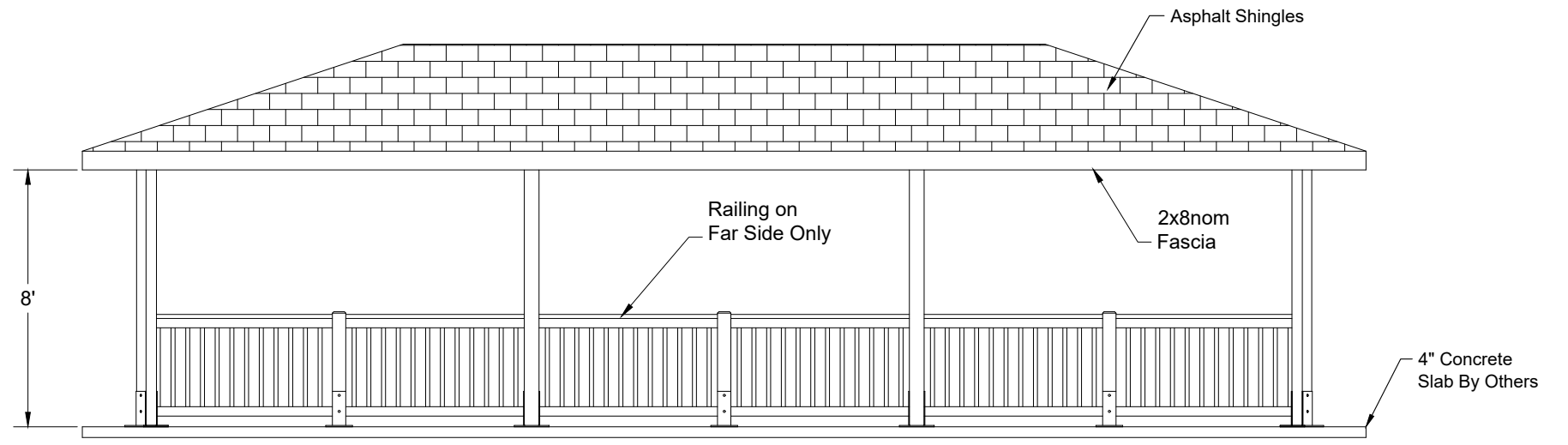
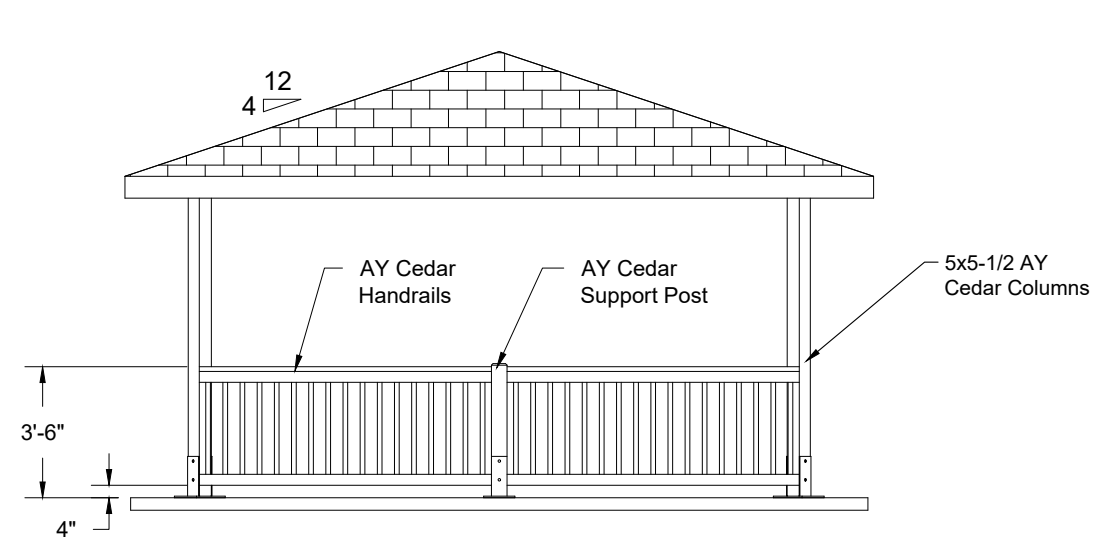
2. SPECIAL EVENTS

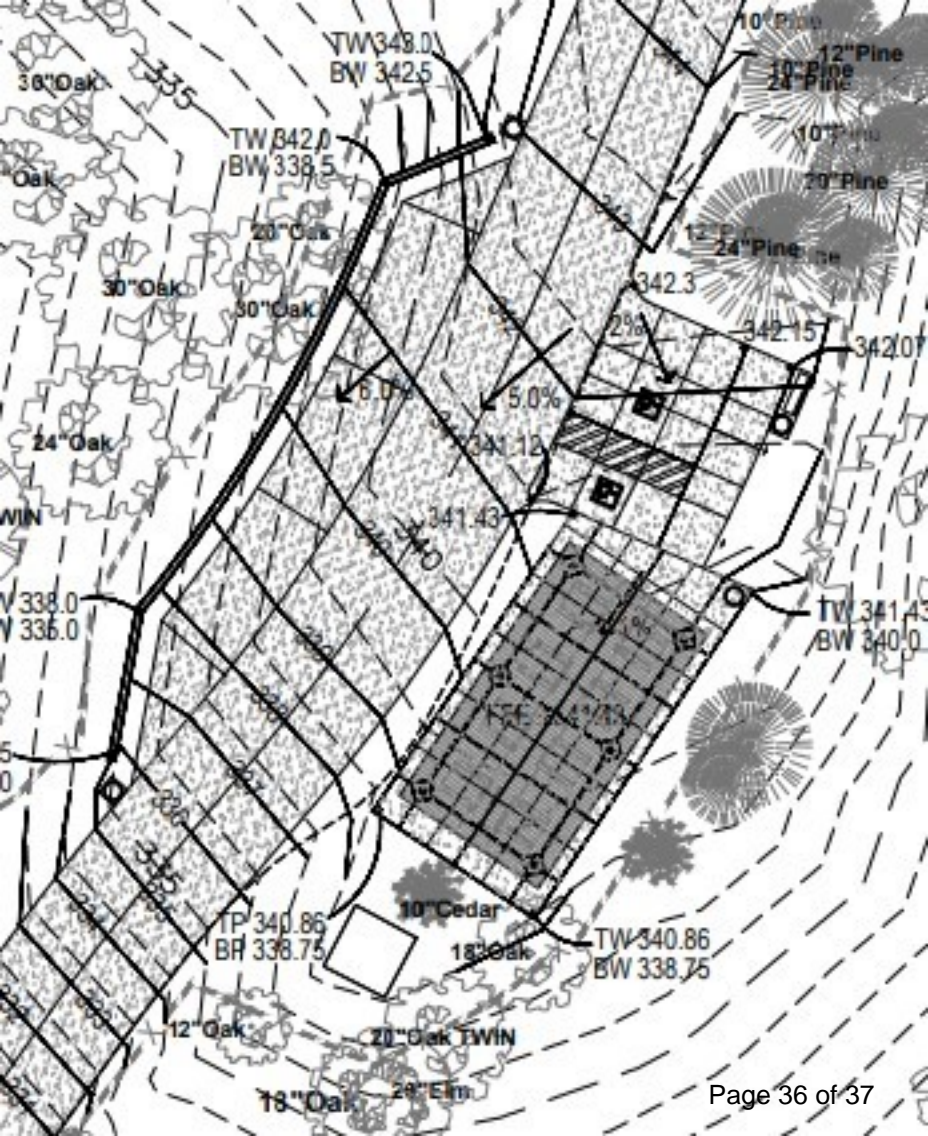
A. Movie Nights

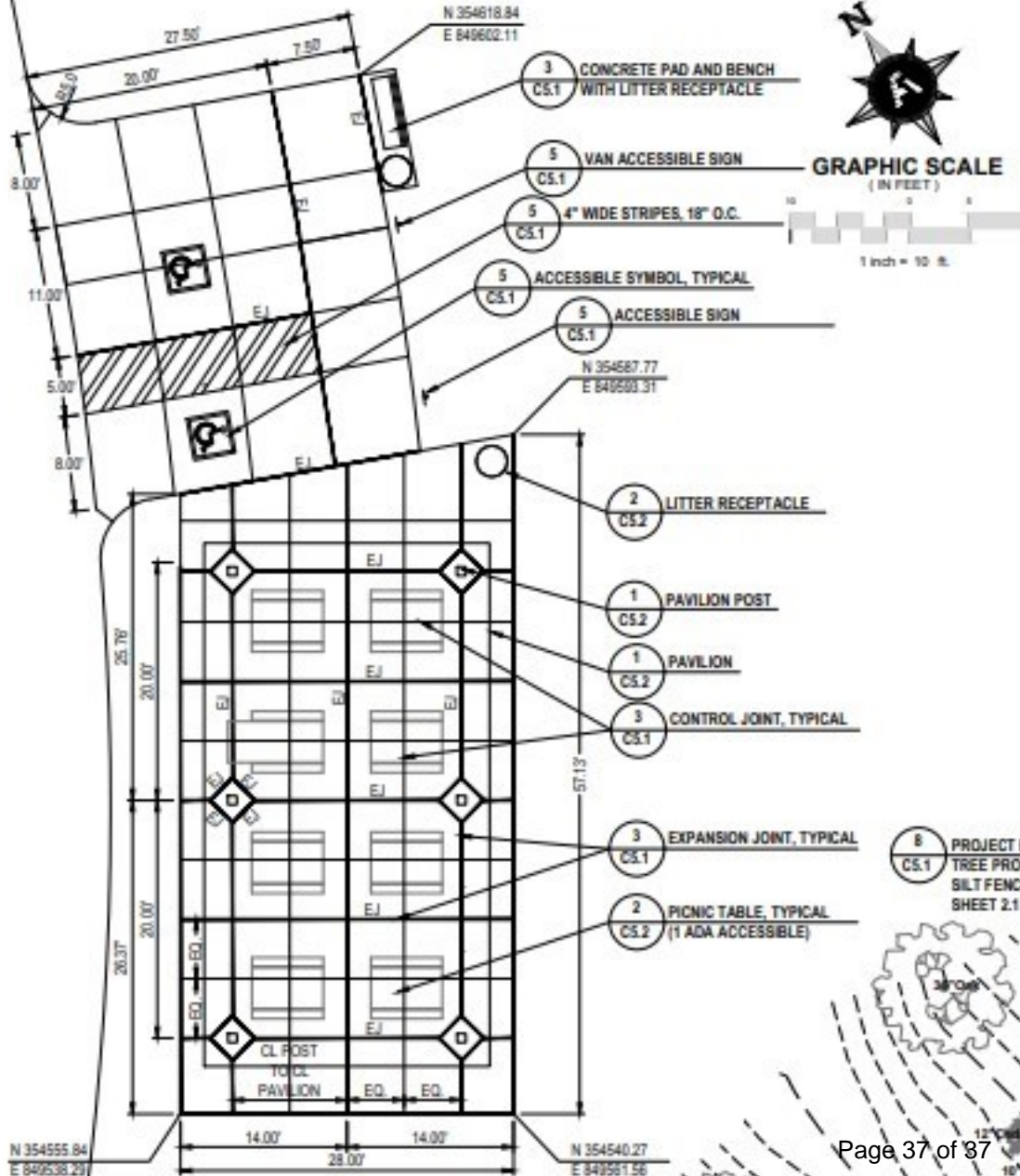
- i. The first scheduled Movie Night was rescheduled (twice) to Friday, June 21. WONKA was played and prepackaged WONKA themed candy and treat bags will be given out. Approximately 100 in attendance.
- ii. Next Movie night is scheduled for August 2 at the LAMP. Move: MIGRATION

B. LAMP Concert Series

- i. Food trucks along with inflatables, facepainting, and other entertainment will be provided.
- ii. Schedule
 - 1. June 22 – Aqaunet
 - a. Approximately 400 were in attendance. Most since moving back from the Athletic Complex.
 - 2. July 27 – Bluff City Bandits
 - 3. August 24 – The Lost 45
 - 4. September 28 – Rock the Boat







GRAPHIC SCALE
(IN FEET)

1 inch = 10 ft.

N 354818.84
E 849602.11

3 CONCRETE PAD AND BENCH
WITH LITTER RECEPTACLE
CS.1

5 VAN ACCESSIBLE SIGN
CS.1

5 4" WIDE STRIPES, 18" O.C.
CS.1

5 ACCESSIBLE SYMBOL, TYPICAL
CS.1

5 ACCESSIBLE SIGN
CS.1

N 354587.77
E 849593.31

2 LITTER RECEPTACLE
CS.2

1 PAVILION POST
CS.2

1 PAVILION
CS.2

3 CONTROL JOINT, TYPICAL
CS.1

3 EXPANSION JOINT, TYPICAL
CS.1

2 PICNIC TABLE, TYPICAL
(1 ADA ACCESSIBLE)
CS.2

8 PROJECT LIMB
TREE PROTECT
SILT FENCE -
SHEET 2.1
CS.1

N 354555.84
E 849538.29

N 354540.27
E 849551.56